

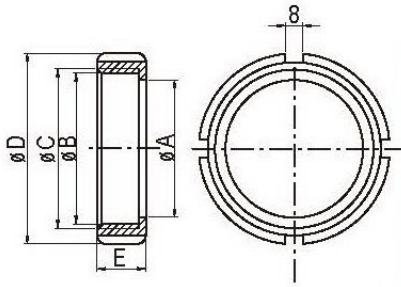
DANSK UNION FITTINGS



Jui Ming Metal Industrial Co., Ltd.

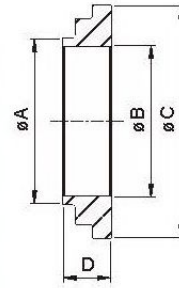


1. Standards: DS 722.
2. Applications: For the Food, Beverage, and other Hygiene Industry
3. Working Pressures: 10 Bar (Max. operating)
4. Materials:
 - Round slotted Nut-----TP-304
 - Expanding Liner-----TP-304, 316, 316L
 - Expanding Male part-----TP-304, 316, 316L
 - Welding Liner-----TP-304, 316, 316L
 - Welding Male part-----TP-304, 316, 316L
 - Blank Round Nut-----TP-304, 316, 316L
 - Blank Liner-----TP-304, 316, 316L
 - Seal -----EPDM, Silicone, Buna-N, Viton.
5. Surface Finished: Ra Max 0.8um.
6. Size range: 1"----- 6"



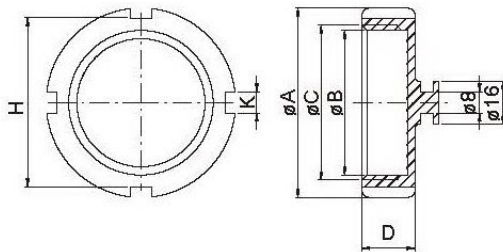
DS-13R 圓螺帽
DANSK ROUND NUT

SIZE	A	B	C	D	E
1"	35.0	40.2	RD44*1/6	57.0	20
1 1/4"	42.3	48.2	RD52*1/6	65.0	20
1 1/2"	48.5	54.2	RD58*1/6	71.0	20
2"	62.5	68.2	RD72*1/6	86.0	22
2 1/2"	76.5	84.2	RD88*1/6	103.0	24
3"	88.5	96.2	RD100*1/6	115.0	25
4"	117.0	126.5	RD130*1/6	150.0	28
4"-4RT	116.0	125.0	RD130*1/4	148.0	31
5"	140.0	154.7	RD160*1/4	178.0	32
6"	161.0	169.8	RD175*1/4	193.0	32



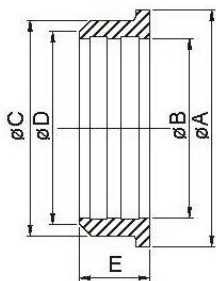
DS-14 無牙接頭
DANSK WELD LINER

SIZE	A	B	C	D
1"	25.4	22.5	40	11
1 1/4"	33.4	27.8	47.4	11
1 1/2"	38.4	35.5	54	11
2"	51.4	48.5	68	11
2 1/2"	63.9	60.5	84	12
3"	76.4	72	96	12
4"	102	97.6	124	12
4"-4RT	102	97.5	123	30
5"	132	123.0	153.5	30
6"	155.4	148.0	168.0	24



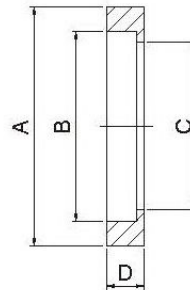
DS-13AH 盲螺帽
DANSK BLANK NUT

SIZE	A	B	C	D	H	K
1"	57	40.2	RD44*1/6	20	49	8
1 1/2"	71	54.2	RD58*1/6	20	63	8
2"	86	68.2	RD72*1/6	22	78	8
2 1/2"	103	84.2	RD88*1/6	24	98	8
3"	115	96.2	RD100*1/6	25	107	8
4"	150	126.2	RD130*1/6	28	139	10



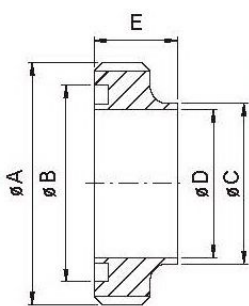
DS-14R 擴管平接頭
DANSK WELD LINER

SIZE	A	B	C	D	E
1"	40.0	25.5	33.8	29.0	16.0
1 1/4"	48.0	31.8	41.5	36.0	16.0
1 1/2"	54.0	38.2	47.5	42.0	18.0
2"	68.0	50.9	61.5	55.0	20.0
2 1/2"	84.0	63.7	75.5	67.5	22.0
3"	96.0	76.4	87.5	80.0	24.0
4"	124.0	101.8	115.0	109.0	30.0



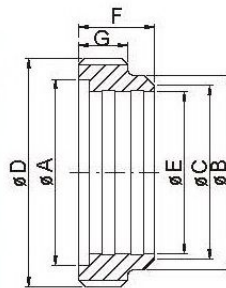
DS 墊片
SEAL FOR DANSK UNION

SIZE	A	B	C	D
1"	32.0	22.5	25.4	5.0
1 1/4"	41.0	29.0	31.8	5.0
1 1/2"	47.0	35.0	38.1	5.0
2"	59.0	47.5	50.8	5.0
2 1/2"	74.5	60.0	63.5	5.0
3"	88.0	72.5	76.2	5.0
4"	116.0	97.5	101.6	5.0



DS-15 有牙接頭
DANSK WELD MALE

SIZE	A	B	D	C	E
1"	RD44*1/6	32	22.5	25.4	18.5
1 1/4"	RD52*1/6	41	27.8	33.4	20
1 1/2"	RD58*1/6	47	35.5	38.4	20
2"	RD72*1/6	59	48.5	51.4	20
2 1/2"	RD88*1/6	74.5	60.5	63.9	24
3"	RD100*1/6	88	72	76.4	24
4"	RD130*1/6	112.5	97.6	102	24
4"-4RT	RD130*1/4	116.0	97.5	101.6	34
5"	RD160*1/4	139.0	123.0	135.0	36
6"	RD175*1/4	164.0	148.0	160.0	37



DS-15R 擴管牙接頭
DANSK EXPAND MALE

SIZE	A	B	C	D	E	F	G
1"	32.0	34.0	29.0	RD44*1/6	25.5	20.0	13.5
1 1/4"	41.0	41.5	36.0	RD52*1/6	31.8	20.0	13.5
1 1/2"	47.0	47.5	42.0	RD58*1/6	38.2	22.0	13.5
2"	59.0	61.5	55.0	RD72*1/6	50.9	24.0	15.5
2 1/2"	74.5	75.5	67.5	RD88*1/6	63.7	26.0	15.5
3"	88.0	87.5	80.0	RD100*1/6	76.4	28.0	16.5
4"	112.5	115.0	110.0	RD130*1/6	101.8	35.0	18.0